

## EZ-Retriever® System

Pre-treatment and Antigen Retrieval System



- DeWax, rehydration & antigen retrieval in one step
- Optimized factory protocols
- User-defined protocols
- High throughput - 96 slides in 35 minutes
- Microwavable containers
- Programmable time and temperature control
- Built-in probe measures solution temperature in real time
- Time saving and uniform heating
- Eco-friendly solutions

## i500 Plus™

LIS Enabled Barcode Label Printer



### Integrated Digitized Data Tracking System

- For printing chemical resistant barcode labels
- Compatible with Xmatrix® and i6000™
- User-friendly software
- Synchronization of protocol information
- Efficient system
- Eliminates human error
- Helps reduce operating cost
- Fast turn-around time

## BioGenex

49026 Milmont Drive, Fremont, CA 94538, USA  
Tel: +1 (800) 421-4149, Fax: +1 (510) 824-1490

225 Cherlapally, Industrial Development Area  
Phase II, Hyderabad, Andhra Pradesh, India 500051  
Tel: +91-40-27185500, Fax: +91-40-27185511/21

780 Cailun Road, Suite 702, Zhangjiang Hi-Tech Park  
Pudong New Area, Shanghai 201203, P.R. China  
Tel: +86-21- 51371830, Fax: +86-21- 51371829

e-mail: support@biogenex.com

© 2011 BioGenex Laboratories, Inc. All Rights Reserved



Precise Results

Accurate Diagnosis

Answers for **Life**

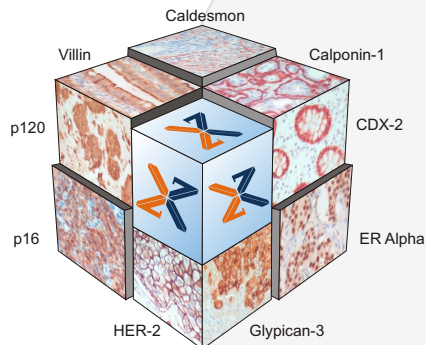


## Molecular Pathology Automated Systems

for today, tomorrow and beyond...



## New Introductions



### Rabbit Monoclonals\*

HER-2 (EP1045Y)  
 ER Alpha (EPR703(2))  
 Ki-67 (EPR3611)  
 Bcl-2 (E17)  
 EGFR (EP38Y)  
 Cyclin D1 (EPR2241(IHC)-32)  
 Beta-Catenin (E247)

Calponin-1 (EP798Y)  
 GCDFP-15 (EP1582Y)  
 CK5/6 (EPR1600Y/EPR1602Y)  
 CK7 (EPR1619Y)  
 MMP-9 (EP1255Y)  
 p120 Catenin (YE372)  
 p27/Kip1 (Y236)

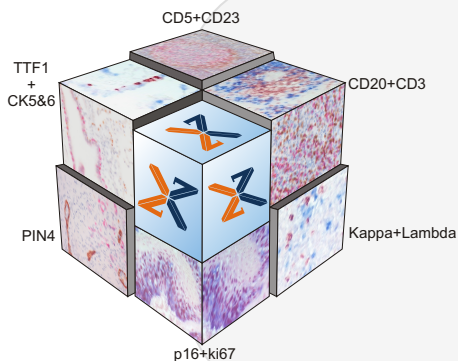
Paxillin (Y113)  
 PDCD4 (EPR3432)  
 Stat-5 Alpha (E289)  
 Survivin (EP2880Y)  
 Top2 Alpha (EP1102Y)  
 CD3 epsilon (EP449E)  
 CD14 (EPR3653)  
 CD23 (SP23)  
 CD61 (EP2417Y)

### Mouse Monoclonals\*

CDX-2 (CDX2-88)  
 p63 (4A4)  
 p63 (4B1E12)  
 PIN4 (13H4+ 348E12+ 4A4)  
 p16 (G175-405)  
 DOG1 (1.1)  
 Glypican-3 (GPC3-88)  
 CD10 (56C6)  
 CD1a (010)  
 CD138 (GLB-1D4)

\*Clones of Antibodies are indicated in the brackets

## Double Stains



- Pre-mixed cocktails
- More data per slide – testing multiple bio-markers simultaneously
- Easy and fast–staining with a four-step protocol
- Saving cost by maximizing resources
- Excellent sensitivity and high antibody efficiency

## Double Stain Detection Kits

- Two systems available
  - Anti-Mouse Polymer-AP and Anti-Rabbit Polymer-HRP
  - Anti-Rabbit Polymer-AP and Anti-Mouse Polymer-HRP
- Robust detection method for visualizing multiple antigens simultaneously in the same tissue sample
- Excellent sensitivity and specificity
- Four step protocol - Saves time
- Eliminates background staining caused by endogenous biotin

## Super Sensitive™ Polymer-HRP Detection Kits

### One-step Polymer-HRP

- One system does it all - mouse, rabbit, guinea pig and rat
- Easy and fast - staining in 15 minutes
- Clean and intense stain without endogenous biotin background
- Higher dilution for primary antibodies

### Polymer-HRP

- Clean stain without endogenous biotin background
- High signal to noise ratio for intense stain
- Excellent sensitivity for weakly expressed antigens
- Universal system for rabbit and mouse antibodies
- Higher dilution for primary antibodies

## XISH™ Detection Kit

- Clean stain without endogenous biotin background
- High signal to noise ratio for intense stain
- Excellent sensitivity
- Designed for fluorescein-labeled DNA or mRNA probes
- Optimized for Xmatrx® Automated Staining System

**X BioGenex**

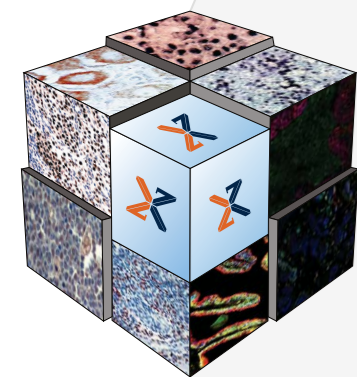
49026 Milmont Drive, Fremont, CA 94538, USA  
Tel: +1 (800) 421-4149, Fax: +1 (510) 824-1490

225 Cherlapally, Industrial Development Area  
Phase II, Hyderabad, Andhra Pradesh, India 500051  
Tel: +91-40-27185500, Fax: +91-40-27185511/21

780 Cailun Road, Suite 702, Zhangjiang Hi-Tech Park  
Pudong New Area, Shanghai 201203, P.R. China  
Tel: +86-21- 51371830, Fax: +86-21- 51371829

## Xmatrix<sup>®</sup> Infinity

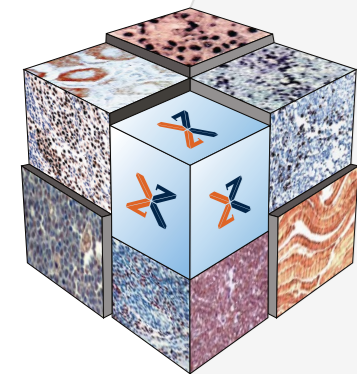
Infinite Possibilities...  
...for Translational and Clinical Research



- Simultaneous optimization of 40 assay parameters
- Intelligent and flexible system with infinite possibilities
  - IHC
  - ISH (CISH)
  - NAD
  - IF
  - Co-detection & Multiplexing
  - FISH and many more...
- Reaction microchamber - 10  $\mu$ l to 100  $\mu$ l
- Reduces micro-reagent usage up to 90%
- 40 Independently thermocyclable (PCR) work stations
- Multi-format specimen analysis
  - Tissues - Frozen or FFPE
  - Cell preparations
  - Smears
  - TMAs
  - Fine Needle Aspirates (FNA) and many more...
- Real-time slide map
- Custom reports for inventory management and regulatory compliance

## Xmatrix<sup>®</sup> Diagnostics

Elegance on the Glass Slide...  
...from Microtome to Microscope

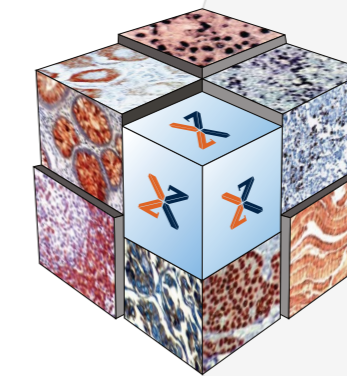


- Multi-functional system performs
  - IHC
  - ISH
- RFID and barcode enabled walk-away staining system
- Standardized process for complete automation in four simple steps
  - Baking
  - Pre-treatment
  - Staining
  - Dehydration, Clearing, Mounting and Coverslipping
- High throughput – 60 IHC slides in 8 hrs.
- Reduced micro-reagent consumption - 30% to 90%
- Real-time slide map
- Slide processing options
  - Random
  - Continuous
  - STAT
- Custom reports for inventory management and regulatory compliance



## i6000<sup>™</sup> Infinity

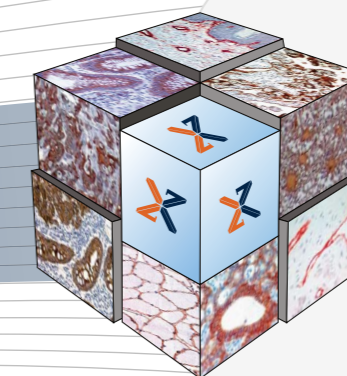
Multifunctional Staining System for Research



- Multifunctional system performs
  - IHC
  - IF
  - SS
- Simultaneous optimization of up to 60 assay parameters
- Fast, easy and flexible system to set-up and optimize protocols
- Built-in factory protocols
- Multi-format specimen analysis
- Prioritization of selected slides
- Real-time slide map for assay parameters
- Delayed run option for un-attended overnight operations
- Custom reports for inventory management and regulatory compliance

## i6000<sup>™</sup> Diagnostics

Barcode Enabled IHC Staining System



- High throughput – 200 slides in 8 hrs
- Slide processing options
  - Random
  - Continuous
  - STAT
- Edit function for protocol optimization
- Real-time color coded slide map for all assay parameters
- Delayed run option for un-attended overnight operations
- Custom reports for inventory management and regulatory compliance

